




WHAT IS THE INVESTMENT MLM PLAN?



A profitable opportunity to earn high returns on your investment while building a sustainable network.



Earning Potential: Through daily earnings, direct commissions, level commissions, and royalty bonuses.



HOW TO GET STARTED ?



Easy Sign-Up Process: Register with us and choose your investment plan.

Get Referral Link: Start earning through direct and level commissions right away.

Customer Support: Dedicated support to guide you every step of the way.



TYPES OF MARKET



**STOCK
MARKET**



**CURRENCY
MARKET**



**COMMODITY
MARKET**



**FOREX
MARKET**



Joining Amount

Joining Amount.

\$20 to \$100000

TYPES OF INCOME

DAILY INCOME

DIRECT INCOME

LEVEL INCOME



DAILY INCOME

4% upto 4x

NOTE:-

1. Daily income After 1 direct. 5% and so on upto 12% per day upto 4x (Direct and level included)

2. Means for taking 12% daily you need to give 8 direct of same or bigger amount.



DIRECT INCOME

10%

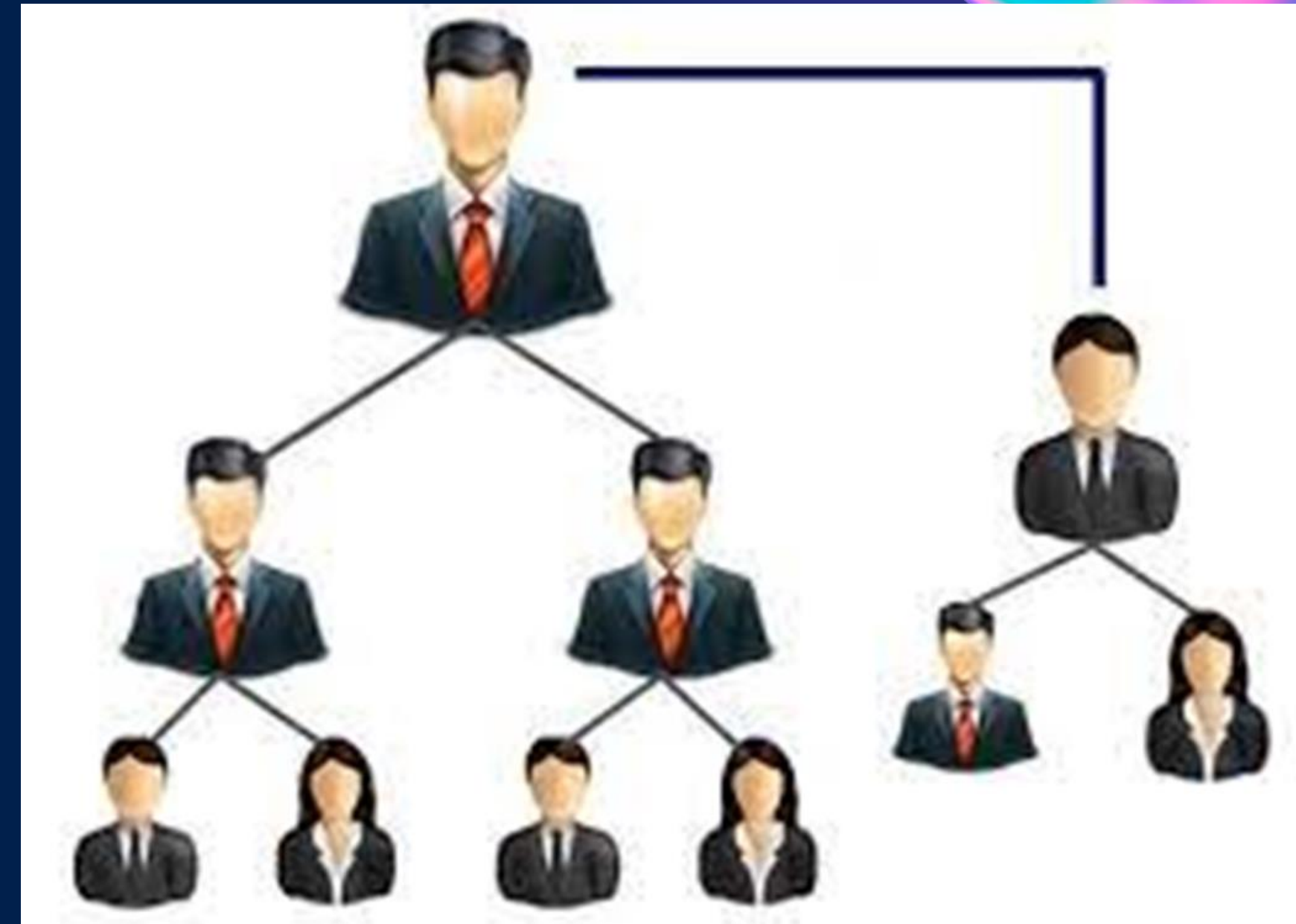
NOTE:-

1. If you dont give 1 direct in 20 days then you will get 4% upto 2x



LEVEL INCOME

LEVEL	INCOME
2	5%
3	4%
4	3%
5	1%
6	1%
7	1%



TERMS AND CONDITIONS

- **1 mobile and. Mail. 3 ids only.**
- **Minimum withdrawal. \$10**
- **Deduction 10% (Admin charge)**



Thank You

